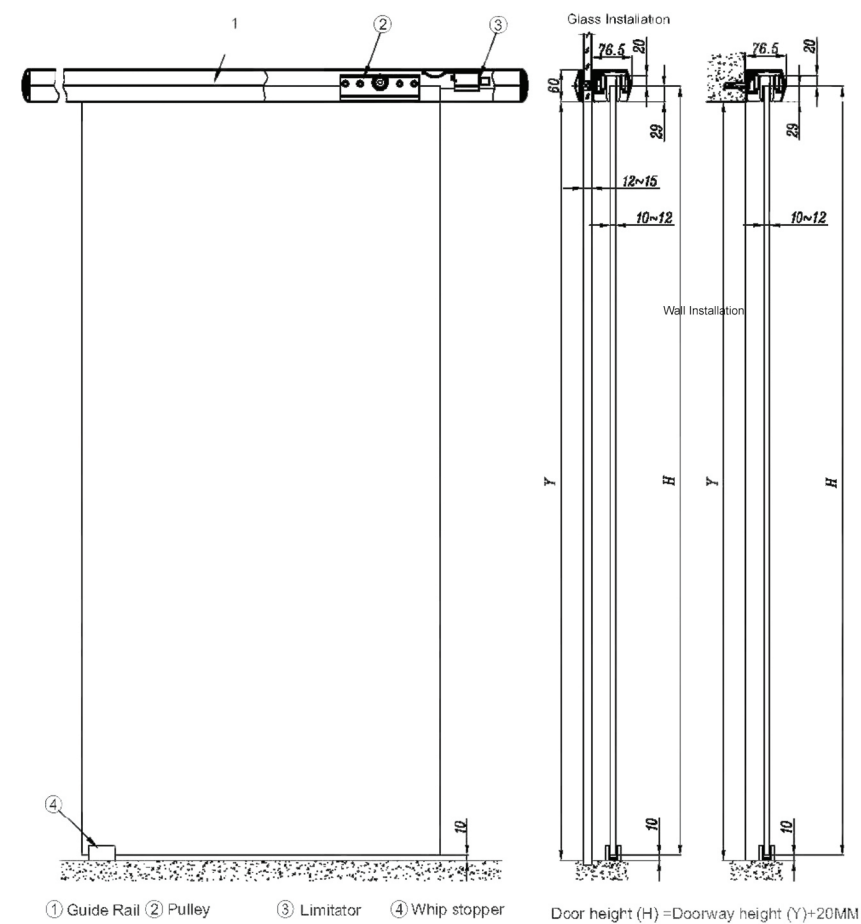


## WOOD DOOR HANGING WHEEL

Simple is not simple





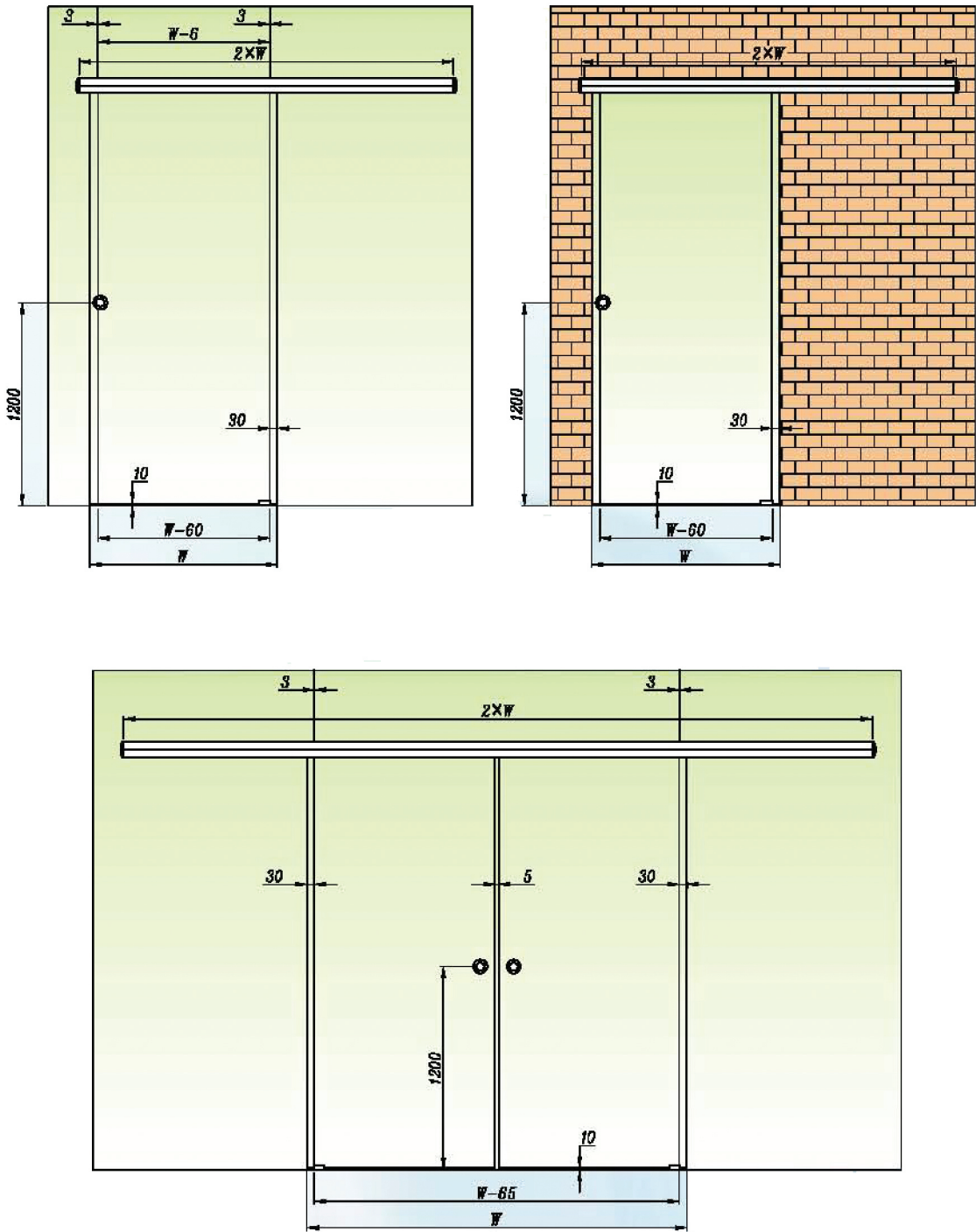


Standard length of guide rail	Door Width		Qty of fittings		
	Single Open Door	Double Open Door	Style Device	Single Open Door	Double Open Door
1.6 m	600 - 800 mm		Guide Rall	1 PC	1 PC
1.6 m	600 - 1200 mm	600 m	Pulley	2 PCS	4 PCS
1.6 m		800 - 1000mm	Limbitor	1 pc of left & right respectively	1 pc of left & right respectively
1.6 m		800 - 1000mm	Whip stopper	1 PC	4 PCS
Maximum load 80kg single door					





# Configuration

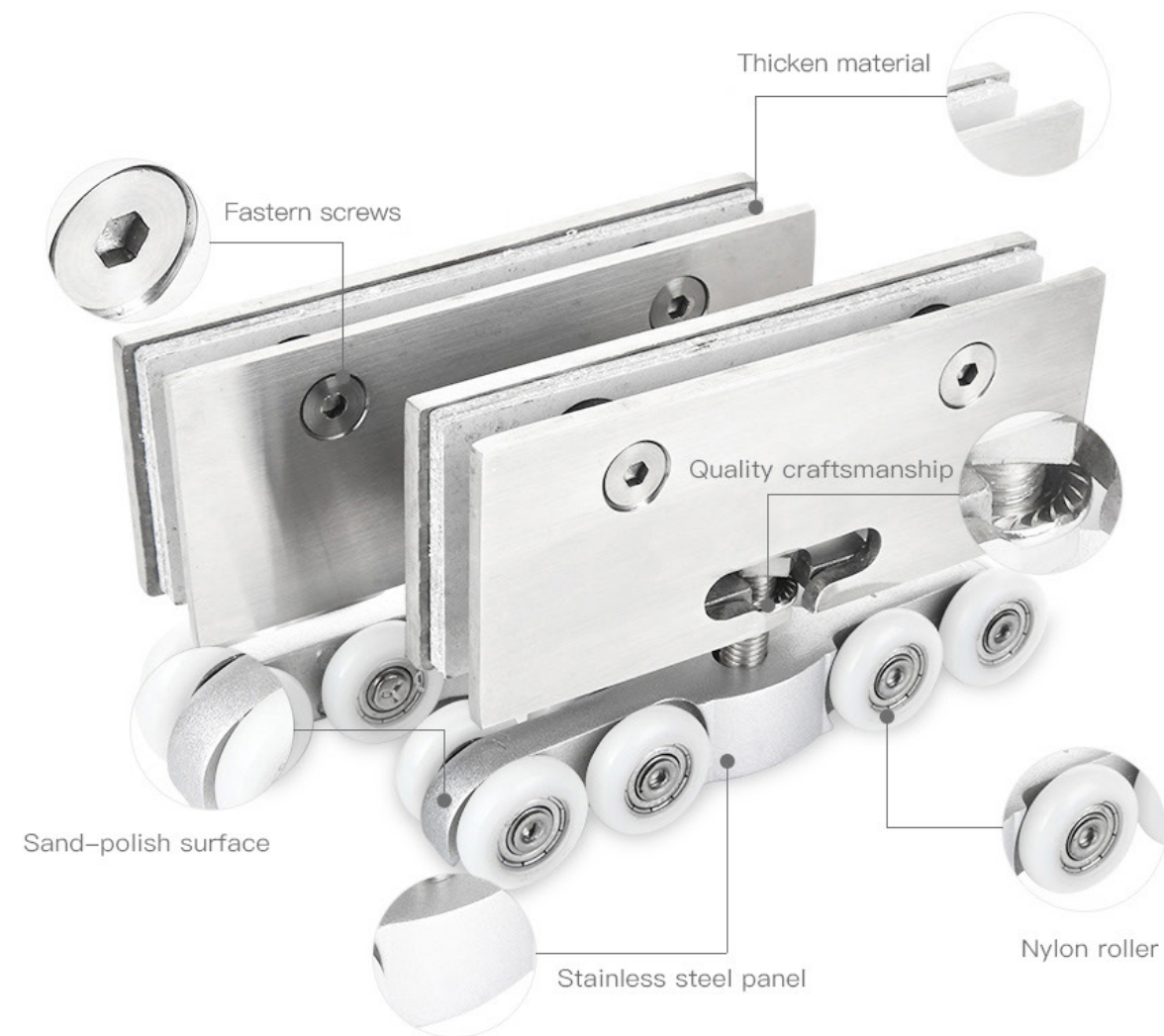


## Product features

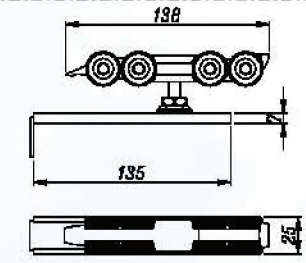
- Perfect integration of stylish design and unadorned character of metal
- Sheave adopts wearable nylon and imported axietree, which can guarantee smoothness and durability of pulley
- Sheave's unique design of muffler cell and exquisite surface can guarantee that the door moves stably and quietly
- Special bolt connecting way realizes the free adjustment up and down 5mm
- If you want to get a better tightness of sash, you can use strip between door gap. Please check the exact type from our catalog



## PRODUCT DETAILS



Sliding Door TLG118



Main material is zinc alloy /copper  
loading capacity  $\leq 120\text{kg}$   
Unique inserted pattern  
Suit for wooden door & framed door

## PRODUCT DESCRIPTION



5

1

STRENGTH BUILD QUALITY

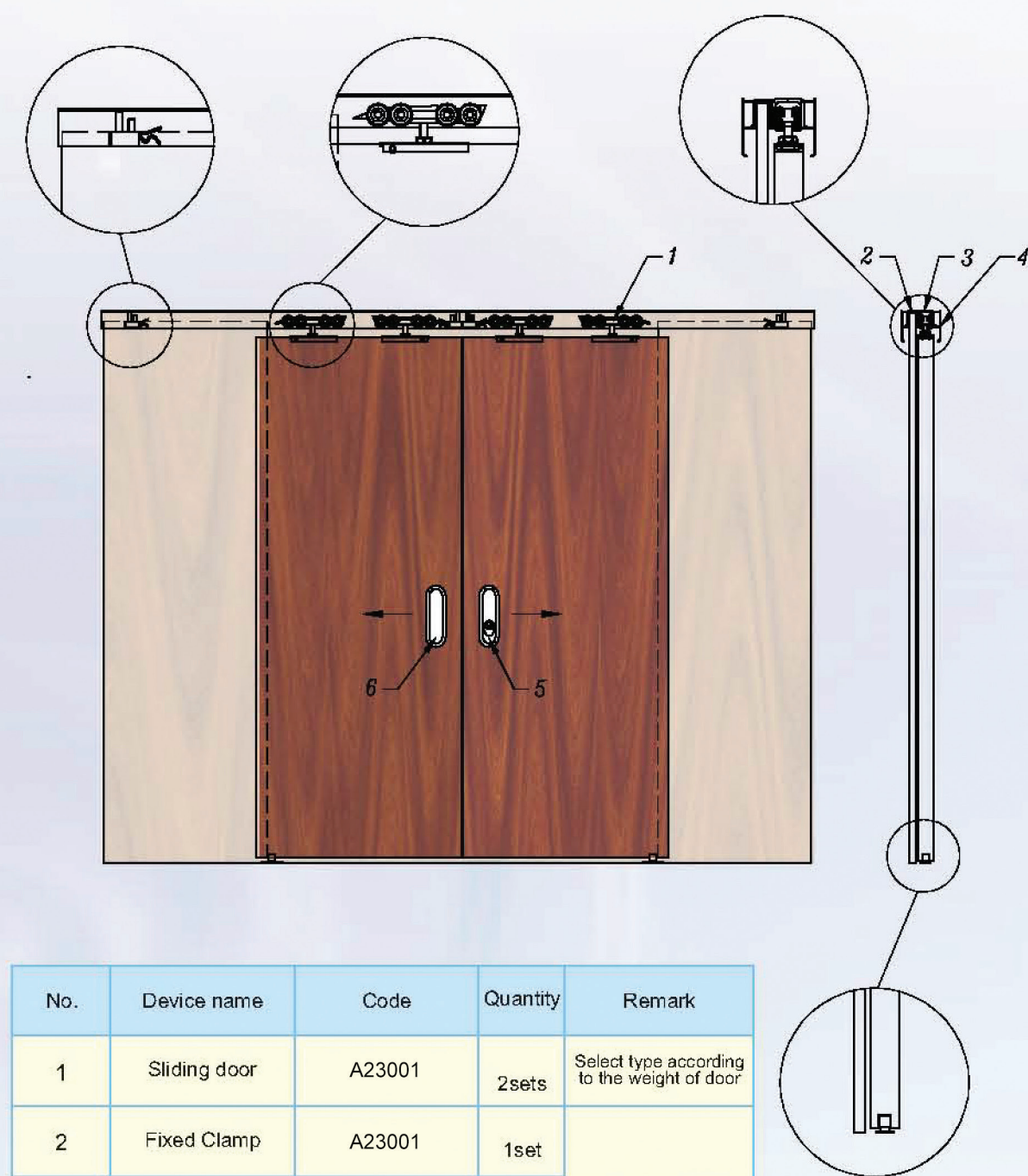
Made with high-precision  
machine tools to ensure quality



6

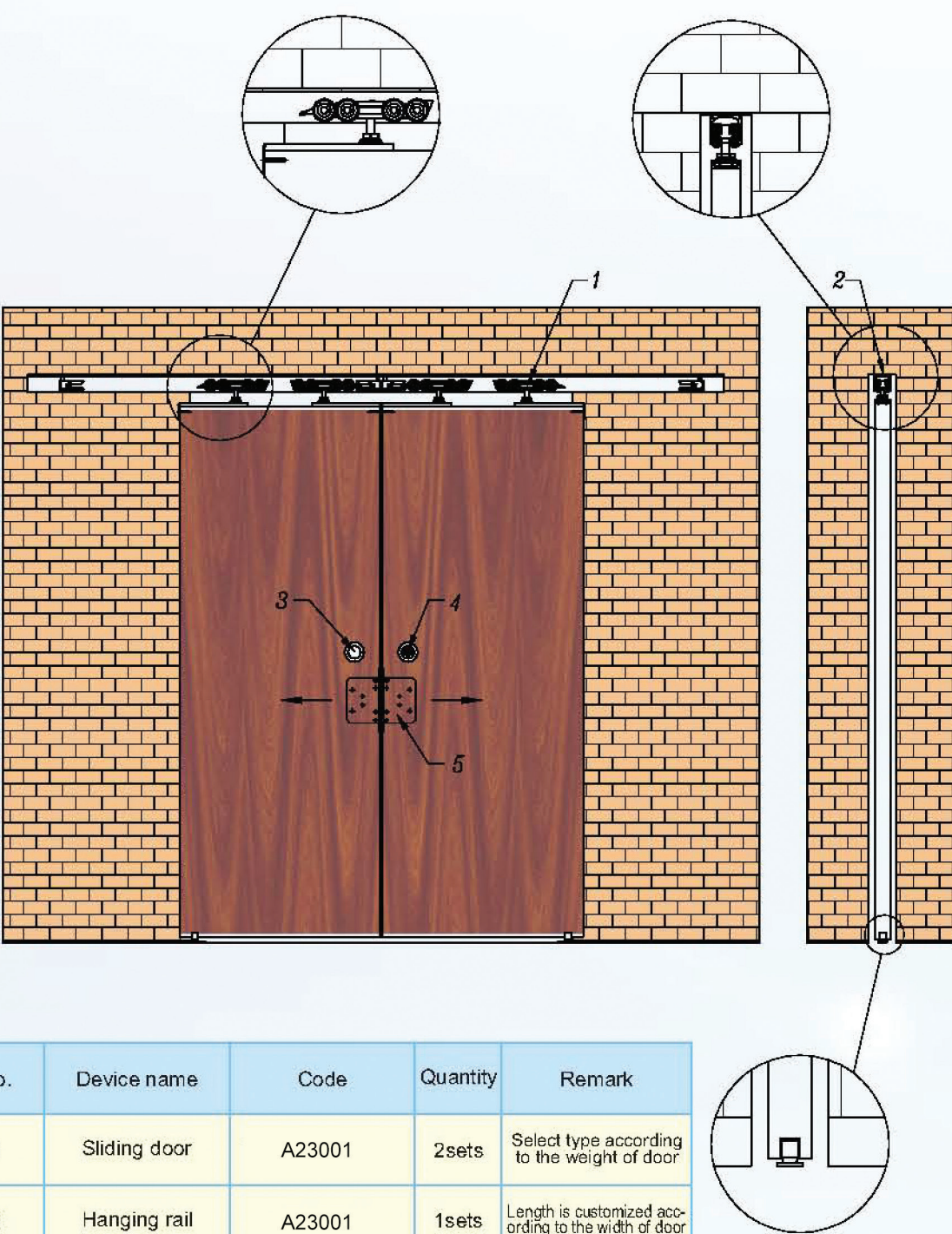


Double-open Wooden Door Configuration



No.	Device name	Code	Quantity	Remark
1	Sliding door	A23001	2sets	Select type according to the weight of door
2	Fixed Clamp	A23001	1set	Length is customized according to the width of door
3	Hanging rail	A23001	1set	
4	Wooden door decoration panel	A23001	2set	
5	Door lock	A23001	1sets	Any one of them is enough
6	Sliding door handle	A23001	1sets	Any one of them is enough

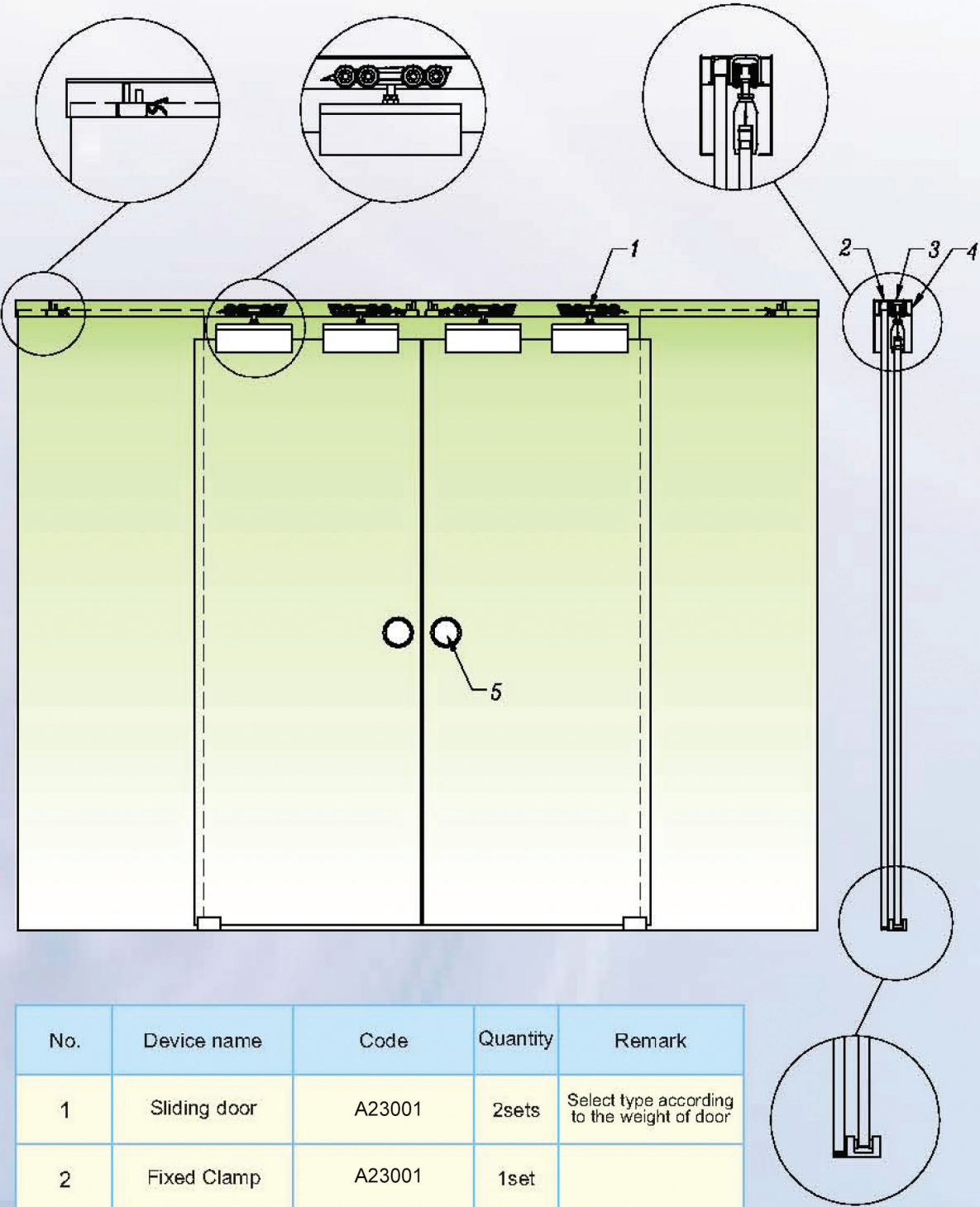
Double-open Wooden Door Configuration



No.	Device name	Code	Quantity	Remark
1	Sliding door	A23001	2sets	Select type according to the weight of door
2	Hanging rail	A23001	1sets	Length is customized according to the width of door
3	Door handle	A23001	1sets	
4	Door lock	A23001	1sets	
5	Sliding door handle	A23001	2sets	



Double-open glass door configuration



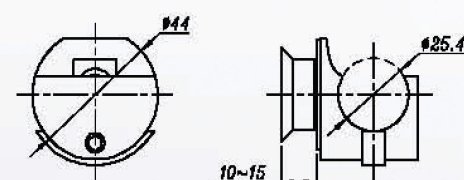
No.	Device name	Code	Quantity	Remark
1	Sliding door	A23001	2sets	Select type according to the weight of door
2	Fixed Clamp	A23001	1set	Length is customized according to the width of door
3	Hanging Rail	A23001	1set	
4	Decoration Panel	A23001	2set	
5	Moving door handle	A23001	2sets	Any one of them is enough



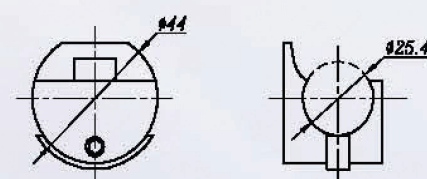
**Product features**  
●Modern Integratioin of Metal and Glass with good sound insulation, Heat preservation and transparence.  
●Material: Stainless Steel 304  
●Glass thickness: 10–15mm  
●Finish: Satin or Mirror  
●If you want to get a better tightness of sash, you can use strip between door gap. Please check the exact type from our catalog



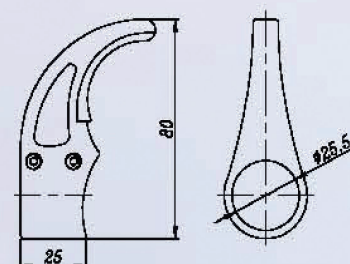
Rail connecting block TL102



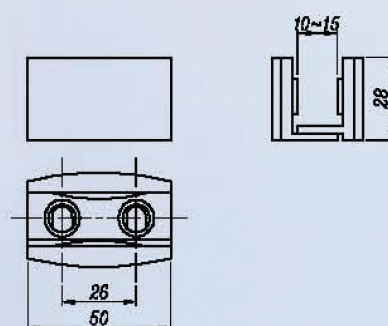
Rail connecting block TL103



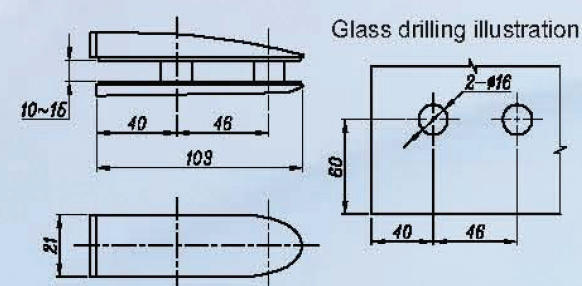
Position block TL114L/TL114R



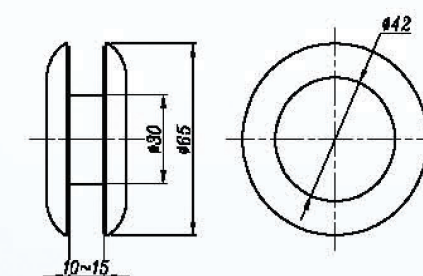
Guide track TL105



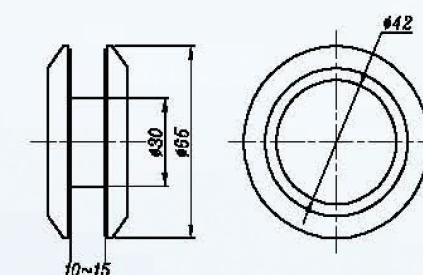
Position block TL106



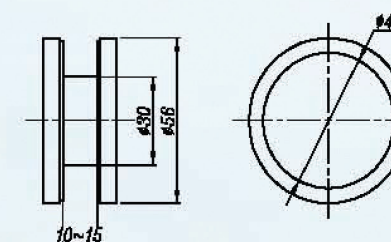
Sliding handle TL609



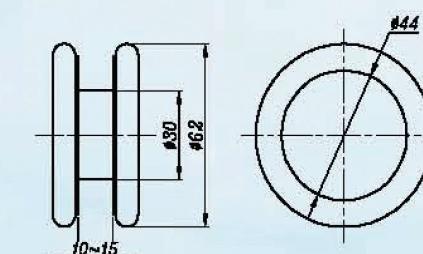
Sliding handle TL610



Sliding handle TL612



Sliding handle TL613







## SLIDING DOOR SYSTEMS

شارع هاشم الاشقر - من جوزيف تيتو  
النزهة الجديدة - القاهرة

+(202)2622 7593/4

+(202)2622 7596

info@arabianeg.com

www.arabianeg.com

+2010 1137 7342

